

Human Element is the Biggest Threat to Cybersecurity

#cybersecurityawarenessmonth

95%

of Security Incidents involve a human element.

74%

of all breaches involve a human element.

49%

of breaches involve the use of stolen credentials

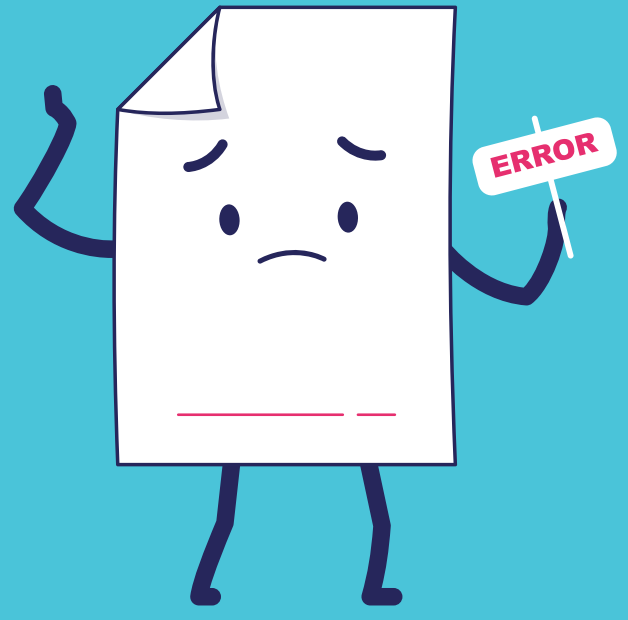
Types of Human Error

Skill-based errors

Skill-based human error consists of slips and lapses: small mistakes that occur when performing familiar tasks and activities

Decision-based errors

Decision-based errors are when a user makes a faulty decision. It often includes the user not having the necessary level of knowledge.



Threat actors continue to target & exploit people

Phishing:

The practice of sending fraudulent communications that trick recipients into clicking a malicious link or downloading a malware-laden attachment.



Malware:

Malicious software designed to disrupt, damage, or gain unauthorised access to a computer system.



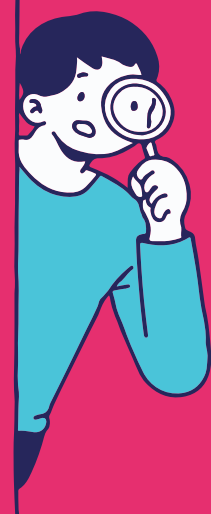
Insider Threats:

Security incidents that arise from within an organization, rather than from external origins.



Supply chain attacks:

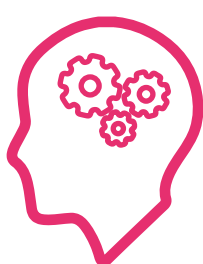
Attempts to damage an organisation by exploiting vulnerabilities in its supply chain network.



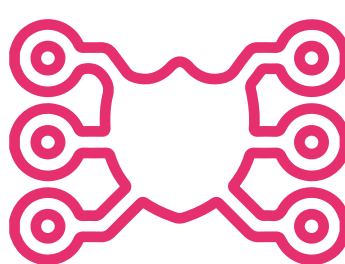
How organizations can help prevent human errors



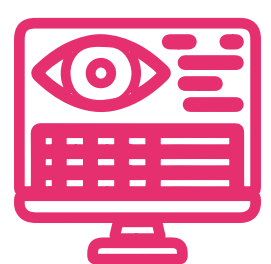
Update security policy



Educate employees



Enforce the principle of least privilege



Monitor employee activity